

SLAS EXAM 2025

MODEL EXAM
CLASS : 5
ENGLISH



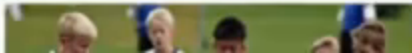
SARVA SHIKSHA ABHIYAN

521

State Level Achievement Survey – 2015-16**Question Paper - I****STD-V****Subject : English****Total Marks: 35****Name of the Student : Time : 1.30 Hours****Class and Section:..... DISE Code:.....****Name of the School:.....****Block:..... District:.....****Read the questions carefully and circle the correct option.****30 x 1 = 30**

1. A person who makes tools with iron is called _____

- a) Goldsmith ☒ b) Blacksmith c) Shoemaker d) Coppersmith



SARVA SHIKSHA ABHIYAN

521

State Level Achievement Survey – 2015-16**Question Paper - I****STD-V****Subject : English****Total Marks: 35****Name of the Student :** **Time : 1.30 Hours****Class and Section:..... DISE Code:.....****Name of the School:.....****Block:..... District:.....****Read the questions carefully and circle the correct option.****30 x 1 = 30**

1. A person who makes tools with iron is called _____

- a) Goldsmith  b) Blacksmith c) Shoemaker d) Coppersmith



SARVA SHIKSHA ABHIYAN

521

State Level Achievement Survey – 2015-16**Question Paper - I****STD-V****Subject : English****Total Marks: 35****Name of the Student :** **Time : 1.30 Hours****Class and Section:..... DISE Code:.....****Name of the School:.....****Block:..... District:.....****Read the questions carefully and circle the correct option.****30 x 1 = 30****1. A person who makes tools with iron is called _____**

- a) Goldsmith ☒ b) Blacksmith c) Shoemaker d) Coppersmith



2. Boys are _____



- a. Dancing b. Singing ☒ c. Playing d. Reading

3. Fill the two box with suitable letters choosing from “ E, T, O, R ,A, S”

B	I	R	D
A			
T			

- a. TS ☒ b. AT c. OS d. TN

2. Boys are _____



- a. Dancing b. Singing ☒ c. Playing d. Reading

3. Fill the two box with suitable letters choosing from “ E, T, O, R ,A, S”

B	I	R	D
A			
T			

- a. TS ☒ b. AT c. OS d. TN

3. Fill the two box with suitable letters choosing from "E, T, O, R, A, S"

B	I	R	D
A			
T			

a. TS  . AT c. OS d. TN

4. Fill in the box with the suitable word.

Lake
↓
water

a. Boat

park
↓
flower

b. Bus

jungle
↓

c. Plane

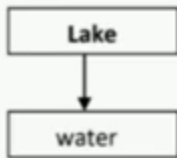
 . Animal

3. Fill the two box with suitable letters choosing from "E, T, O, R, A, S"

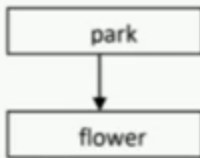
B	I	R	D
A			
T			

a. TS ✓. AT c. OS d. TN

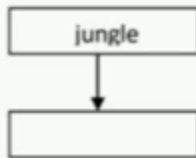
4. Fill in the box with the suitable word.



a. Boat



b. Bus



c. Plane

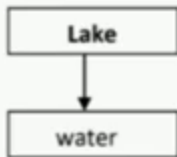
✓. Animal

3. Fill the two box with suitable letters choosing from "E, T, O, R, A, S"

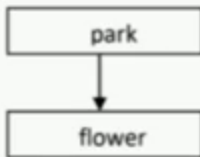
B	I	R	D
A			
T			

a. TS ✓. AT c. OS d. TN

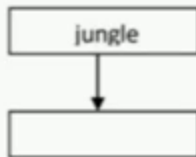
4. Fill in the box with the suitable word.



a. Boat



b. Bus



c. Plane

✓. Animal

ENNUM EZHUTHUM APP - WORK BOOK ANSWER KEY PDF FILE

5. Choose the word related to 'train'.

- a. Tablet ☒ b. Track c. Single d. Flap

6. Choose the correct word from the options to fill the gap.

B__a__ is a seed

- a. bird b. both c. barn ☒ d. bean

7. Look at the picture and fill in the blank.

The teacher holds a _____ in her hand

- a. Chalk b. Stick c. Pen ☒ d. Book



8. The sun is hot and _____

- a. dark b. dull c. pale ☒ d. bright

9. Choose the prefix for the given word "placed".

- a. In b. Dis ☒ c. Mis d. Un

ENNUM EZHUTHUM APP - WORK BOOK ANSWER KEY PDF FILE

5. Choose the word related to 'train'.

- a. Tablet ☒ b. Track c. Single d. Flap

6. Choose the correct word from the options to fill the gap.

B__a__ is a seed

- a. bird b. both c. barn ☒ d. bean

7. Look at the picture and fill in the blank.

The teacher holds a _____ in her hand

- a. Chalk b. Stick c. Pen ☒ d. Book



8. The sun is hot and _____

- a. dark b. dull c. pale ☒ d. bright

9. Choose the prefix for the given word "placed".

- a. In b. Dis ☒ c. Mis d. Un

It was a big forest. Animals like Deer, Rat, Rabbit and Fox were all afraid of King Lion. That was a bad day for the king lion. During his chase to catch a rabbit he stumbled into a small bush. A thorn pierced his palm. He cried for help.

Whom did the lion chase?

- a. Fox ☒ b. Rabbit c. Rat d. Deer

11. Pick out the correct rhyming pair.

- a. play - boy b. test - talk c. dog - bad ☒ d. lime - time

12. Find the correct pair related to Newspaper.

- a. Editor - Director ☒ b. Editor - Reporter c. Doctor - Publisher d. Director - Engineer

13. Tharun is my friend. ____ likes sweets.

- a. She b. It ☒ c. He d. They

14. Read the sentences and fill the suitable adjective.

Arun is the _____ boy in the class.

- a. Taller b. tall ☒ c. tallest d. long

It was a big forest. Animals like Deer, Rat, Rabbit and Fox were all afraid of King Lion. That was a bad day for the king lion. During his chase to catch a rabbit he stumbled into a small bush. A thorn pierced his palm. He cried for help.

Whom did the lion chase?

- a. Fox ☒ b. Rabbit c. Rat d. Deer

11. Pick out the correct rhyming pair.

- a. play - boy b. test - talk c. dog - bad ☒ d. lime - time

12. Find the correct pair related to Newspaper.

- a. Editor - Director ☒ b. Editor - Reporter c. Doctor - Publisher d. Director - Engineer

13. Tharun is my friend. ____ likes sweets.

- a. She b. It ☒ c. He d. They

14. Read the sentences and fill the suitable adjective.

Arun is the _____ boy in the class.

- a. Taller b. tall ☒ c. tallest d. long

It was a big forest. Animals like Deer, Rat, Rabbit and Fox were all afraid of King Lion. That was a bad day for the king lion. During his chase to catch a rabbit he stumbled into a small bush. A thorn pierced his palm. He cried for help.

Whom did the lion chase?

- a. Fox ☒ b. Rabbit c. Rat d. Deer

11. Pick out the correct rhyming pair.

- a. play - boy b. test - talk c. dog - bad ☒ d. lime - time

12. Find the correct pair related to Newspaper.

- a. Editor - Director ☒ b. Editor - Reporter c. Doctor - Publisher d. Director - Engineer

13. Tharun is my friend. ____ likes sweets.

- a. She b. It ☒ c. He d. They

14. Read the sentences and fill the suitable adjective.

Arun is the _____ boy in the class.

- a. Taller b. tall ☒ c. tallest d. long

15. Identify the word series which is in the **alphabetical order**.

- a. ☒ zip, wall, game, mat b. mat, zip, wall, game
c. ☒ game, mat, wall, zip d. wall, game, zip, mat

16. Which word is taken from the word **"teacher"**

- a. talk b. king c. ☒ each d. cut

17. Seeing a dog, Mala ran _____

- a. ☒ Fast b. fasty c. fasting d. fasted

18. How many syllables are there in the word **"beautiful"**?

- a. 2 b. 4 c. ☒ 3 d. 5

beau-ti-ful

19. What is the name of the national leader found in the picture?



15. Identify the word series which is in the **alphabetical order**.

- a. ☒ zip, wall, game, mat b. mat, zip, wall, game
c. ☒ game, mat, wall, zip d. wall, game, zip, mat

16. Which word is taken from the word **"teacher"**

- a. talk b. king c. ☒ each d. cut

17. Seeing a dog, Mala ran _____

- a. ☒ Fast b. fasty c. fasting d. fasted

18. How many syllables are there in the word **"beautiful"**?

- a. 2 b. 4 c. ☒ 3 d. 5

beau-ti-ful

19. What is the name of the national leader found in the picture?



19. What is the name of the national hero found in the picture?



- a. Gandhiji b. APJ Abdul Kalam c. Nehruji ☒ d. Nethaji

20. The opposite of "rich" is _____

- a. healthy b. clever ☒ c. poor d. wealthy

21. Ravi _____ Raja are friends,

- ☒ a. and b. so c. that d. but

22. Circle the set of words which **starts with same letter**.

- a. water - matter b. bright - night c. cool - wool ☒ d. summer - Sun

19. What is the name of the national hero found in the picture?



- a. Gandhiji b. APJ Abdul Kalam c. Nehruji ☒ d. Nethaji

20. The opposite of "rich" is _____

- a. healthy b. clever ☒ c. poor d. wealthy

21. Ravi _____ Raja are friends,

- ☒ a. and b. so c. that d. but

22. Circle the set of words which **starts with same letter**.

- a. water - matter b. bright - night c. cool - wool ☒ d. summer - Sun

19. What is the name of the national hero found in the picture?



- a. Gandhiji b. APJ Abdul Kalam c. Nehruji ☒ d. Nethaji

20. The opposite of "rich" is _____

- a. healthy b. clever ☒ c. poor d. wealthy

21. Ravi _____ Raja are friends,

- ☒ a. and b. so c. that d. but

22. Circle the set of words which **starts with same letter**.

- a. water - matter b. bright - night c. cool - wool ☒ d. summer - Sun

22. Circle the set of words which starts with same letter.

- a. water - matter b. bright - night c. cool - wool **d. summer - Sun**


23. Read carefully and choose the answer for the question given below.

Day	Temperature (C)
Sunday	32° c
Monday	31° c
Tuesday	34° c
Wednesday	35° c
Thursday	25° c
Friday	29° c
Saturday	30° c

Which day was the hottest day of the week?

- a. Monday **b. Wednesday** c. Tuesday d. Thursday

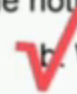
22. Circle the set of words which starts with same letter.

- a. water - matter b. bright - night c. cool - wool  d. summer - Sun

23. Read carefully and choose the answer for the question given below.

Day	Temperature (C)
Sunday	32° c
Monday	31° c
Tuesday	34° c
Wednesday	35° c
Thursday	25° c
Friday	29° c
Saturday	30° c

Which day was the hottest day of the week?

- a. Monday  b. Wednesday c. Tuesday d. Thursday

24. Maan is playing football.

_____ is playing football?

- ☒ a. Who b. What c. If d. How

25. Money is deposited in _____

- a. Riverbank b. Blood bank c. Store house ☒ d. Bank

26. Find the past tense of "**Explain**".

- a. Explaining ☒ b. Explained c. Explain d. Explains

27. Choose the suffix for the word "**Joy**".

- ☒ a. ful b. ly c. ness d. ment

28. Pick out the **noun** from the given words.

- a. Make ☒ b. Man c. Made d. writing

29. Rama is _____ boy who scored 100% in Maths.

- a. An b. The c. He ☒ d. A

24. Maan is playing football.

_____ is playing football?

- ☒ a. Who b. What c. If d. How

25. Money is deposited in _____

- a. Riverbank b. Blood bank c. Store house ☒ d. Bank

26. Find the past tense of "**Explain**".

- a. Explaining ☒ b. Explained c. Explain d. Explains

27. Choose the suffix for the word "**Joy**".

- ☒ a. ful b. ly c. ness d. ment

28. Pick out the **noun** from the given words.

- a. Make ☒ b. Man c. Made d. writing

29. Rama is _____ boy who scored 100% in Maths.

- a. An b. The c. He ☒ d. A

24. Maan is playing football.

_____ is playing football?

- ☒ a. Who b. What c. If d. How

25. Money is deposited in _____

- a. Riverbank b. Blood bank c. Store house ☒ d. Bank

26. Find the past tense of "**Explain**".

- a. Explaining ☒ b. Explained c. Explain d. Explains

27. Choose the suffix for the word "**Joy**".

- ☒ a. ful b. ly c. ness d. ment

28. Pick out the **noun** from the given words.

- a. Make ☒ b. Man c. Made d. writing

29. Rama is _____ boy who scored 100% in Maths.

- a. An b. The c. He ☒ d. A

30. Find the word not in the grid.

ENNUM EZHUTHUM APP - WORK BOOK ANSWER KEY PDF FILE

S	L	O	V	E
R	S	L	O	W
B	L	V	O	E
S	O	L	V	E

- a. Love b. slow c. solve d. cheer

Writing: – Write the sentences as dictated by the teacher

2 x 1 = 2

31. HE IS A BOY

32. SUN RISES IN THE EAST

Reading:- Read the sentences as shown by the teacher

3 x 1 = 3

33. MOUNTAIN
BEAUTIFUL

30. Find the word not in the grid.

ENNUM EZHUTHUM APP - WORK BOOK ANSWER KEY PDF FILE

S	L	O	V	E
R	S	L	O	W
B	L	V	O	E
S	O	L	V	E

- a. Love b. slow c. solve d. cheer

Writing: – Write the sentences as dictated by the teacher

2 x 1 = 2

31. HE IS A BOY

32. SUN RISES IN THE EAST

Reading:- Read the sentences as shown by the teacher

3 x 1 = 3

33. ☐ MOUNTAIN
BEAUTIFUL



Thanks For Watching

Don't forget to subscribe

InShot